

The *most* complete SpinForming control ever, for new or retrofit machines.

www.num.com

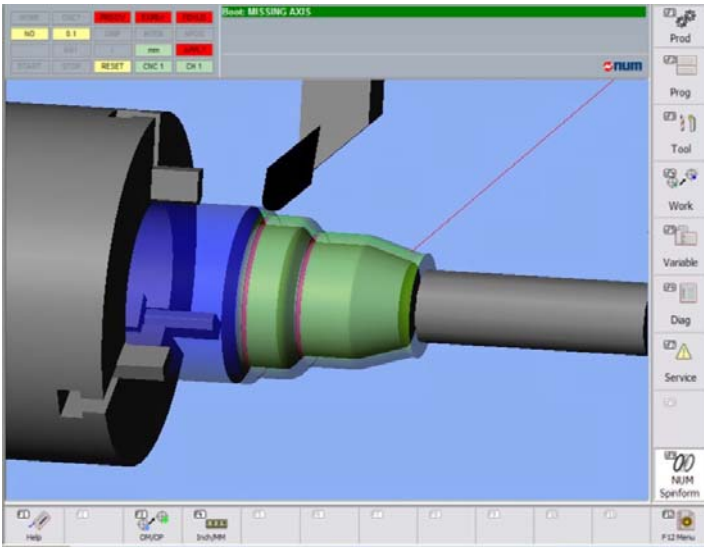


Configured with a very effective set of hardware and software, Num's power CNC system is particularly well suited to address all aspects of the metal forming manufacturing process. This is a complete off the shelf user-friendly interactive graphical interface, which allows the user to operate the machine without prior knowledge of ISO code programming. NUM Spinform includes features like: joystick jog interface, record and playback, travel limit safety zone from 2D template and on the fly handwheel correction.

The Num Power CNC system is perfectly suited for most metal forming methods that requires both dimensional accuracy and high-quality surface finish. NUM has world class range of products and services, including:

- ❑ Complete Range of CNC Controls
- ❑ Servo / Spindle Motors and Drives
- ❑ Custom Machine Application Software
- ❑ Product Technical Support and Spare Parts
- ❑ Product Training
- ❑ Field Service

Complete Solutions: NUM Power for SpinForming



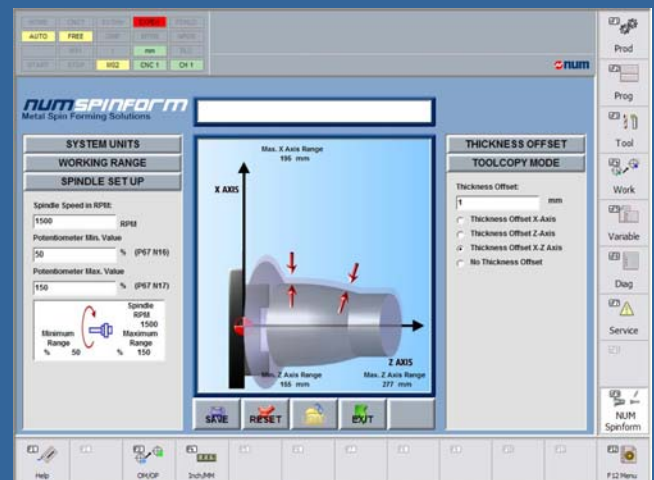
NUM Spinform : User Friendly Interface

The Windows-based process is extremely user-friendly. The operator does not have to use ISO programming; he or she simply fills in the initial configuration data fields presented to him/her by the program. After this NUM Spinform will allow the operator to either record a tool form (via joystick), add thickness offset, record a spin cycle (via joystick), compensate spin cycle (via handwheel or offline editing) and run part in production.

Flexibility..... for a Range of Metal Forming Machines

The NUM Spinform package allows for a spinning machine on a two-axis compound slide (X and Z), with auxiliary slides and/ or tool changers that are used to carry out finishing operations such as profiling, machining, edge trimming, curling, beading and flanging. Additional features and pages can be customized by the OEM or via the assistance of the NUM Engineering Team.

Features: Num Axium Power
Compact construction
Different Hardware platforms with different processors
Available with Co-processor (OP Dyn in C)
Flash EPROM for the operating system
Fully compatible with series Num 1000 series
Up to 32 axes
Up to 8 groups
Integrated PLC
Interface to PC: 115 kBaud serial, TCP/IP.
Special CNC-functions
Variable Speed Joystick Interface for Combinational 2-Axis Jog
Record and Playback of the Motion Cycle
"On-the-Fly" Handwheel Correction
Travel Limit Safety Zone from 2-D Template
User specific real time tasks, G and M functions
Structured programming of NC Motion Cycle
Acceleration Ramps and Position Loop Gain modification from Motion Cycle
Operator Interface
User Friendly Windows Based Interface.
Completely definable operator interface
Prompts for assistance during machine setup
Motion Cycle can be downloaded for off-line editing.
On-Line ball bar trace shows path errors by graphics display
Real Time 2-D trace of motion cycle and preform, prior to spinforming



NUM SPINFORM

Complete metal spin forming solutions

- ❑ NUM Spinform is an extremely user-friendly part programming interface and a 2D real time graphical simulation.
- ❑ The operator does not have to know or use ISO programming.
- ❑ Programming data is entered into fields that are presented in a clear and concise manner.
- ❑ Includes features like: joystick jog interface, record and playback, travel limit safety zone from 2D template and on the fly handwheel correction.

Click on the link below to download a video demo.

